

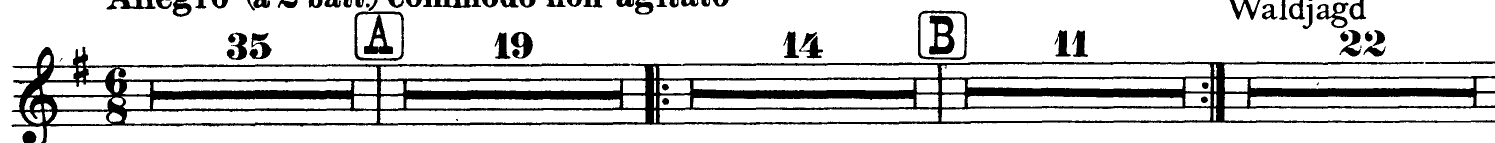
Bedrich Smetana  
Má Vlast No. 2: The Moldau (Vltava)

杭州少儿艺术团交响乐团  
考试专用  
严禁用于其他用途

**Kleine Flöte**

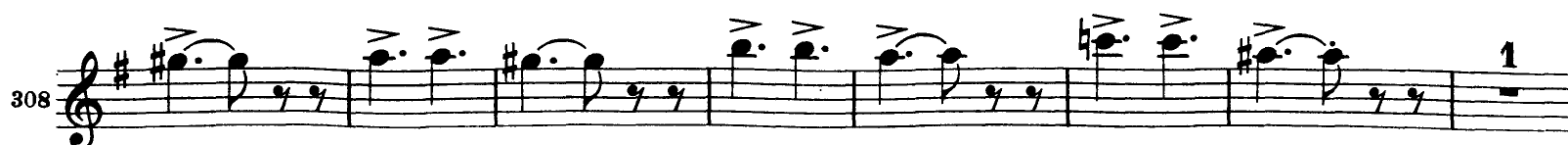
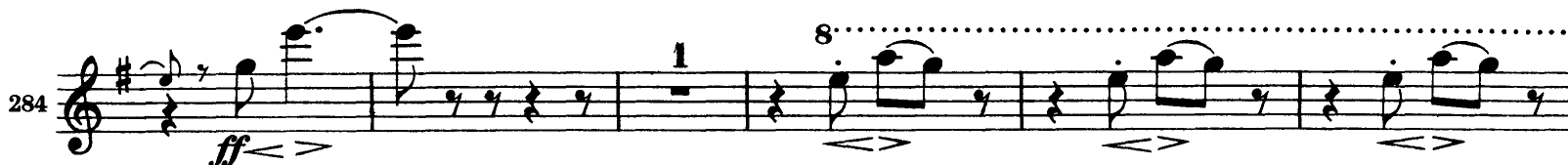
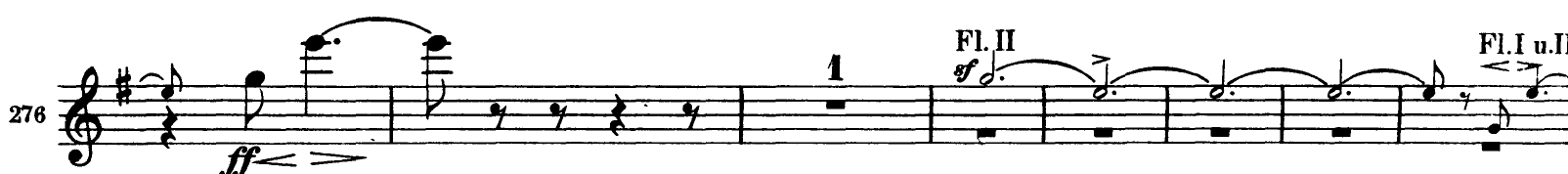
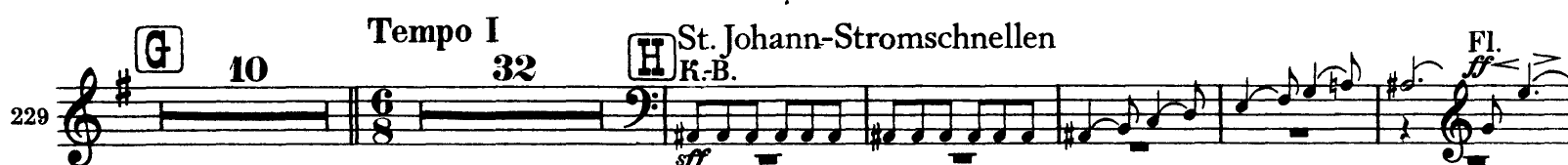
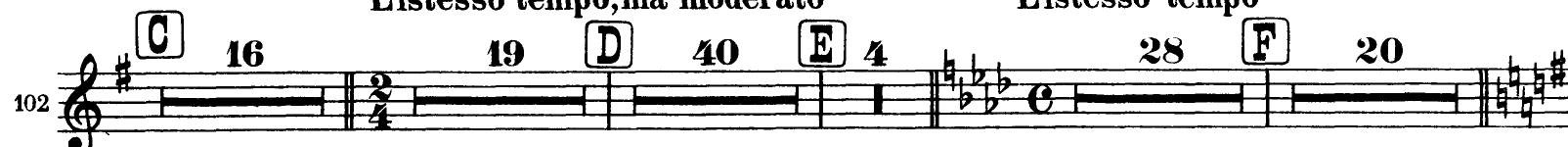
Die beiden Quellen der Moldau  
Allegro (a 2 batt.) comodo non agitato

Waldjagd 22



Bauernhochzeit  
L'istesso tempo, ma moderato

Mondschein; Nymphenreigen  
L'istesso tempo



\*) Die mit \* bezeichneten kleinen Noten werden nur dann mitgespielt, wenn die angegebenen Instrumente nicht besetzt sind.

## Kleine Flöte

杭州少儿艺术团交响乐团  
考试专用  
严禁用于其他用途

316 *sempre cresc.* **ff**

323 **6** Viol. I **ff**

Die Moldau in ihrer ganzen Breite  
**Più moto**

333 **fz**

340 **fz**

347 **fz**

353 **fz**

Vyšehrad-Motiv (Aus der I. symph. Dichtung)

359 **ff** **fz** **ff** **fz** **fz** **fz**

370 **fz** **sempre ff** **fz**

380 **ff** **fz** **fz**

391 **fz** **fff** **fz** **fz**

403 **sf dim.** **15** **rall.** **2** **ff** **fz**

The image shows a page of a musical score for 'Kleine Flöte' (Small Flute) from Smetana's 'The Moldau'. The score is written for a single flute part. It begins with a treble clef and a key signature of one sharp (F#). The tempo and mood are indicated as 'sempre cresc.' and 'Più moto'. The score includes various dynamic markings such as **ff** (fortissimo), **fz** (forzando), **fff** (fortississimo), **sf dim.** (sforzando then diminuendo), and **rall.** (rallentando). There are also performance instructions like 'Die Moldau in ihrer ganzen Breite' and 'Vyšehrad-Motiv (Aus der I. symph. Dichtung)'. The score is divided into measures, with measure numbers 316, 323, 333, 340, 347, 353, 359, 370, 380, 391, and 403 marked. A red bracket highlights a section of the score between measures 323 and 333. Another red bracket highlights a section of the score between measures 380 and 391. A red bracket also highlights a section of the score between measures 359 and 370.